

# Panasonic

ideas for life

electronic board

UB-5325 UB-5825 UB-7325

## Panaboard™

### Metallic Type

Plain Paper Printing



**Panaboard takes notes instead of you  
Improves your Presentations and meetings**

**Panaboard UB-5325, UB-5825, UB-7325**

- Our range of Panaboards come with an integral printer for easy-operation.
- Plain paper printing with multiple copies.
- Panaboard can work as a PC printer.
- Panaboard can be controlled from PC.
- Panaboard keeps 100% audience attention and increases participation.
- Panaboard increases efficiency and reduces meeting time.
- Panaboard can be wall-mounted or used with floor-stand option.

### USB Interface

Microsoft®

Windows® 98,  
Windows® Me,  
Windows® 2000,  
Windows® XP  
operating systems

### Used for

Seminars

Meetings

Brain Storming

Scheduling

Training

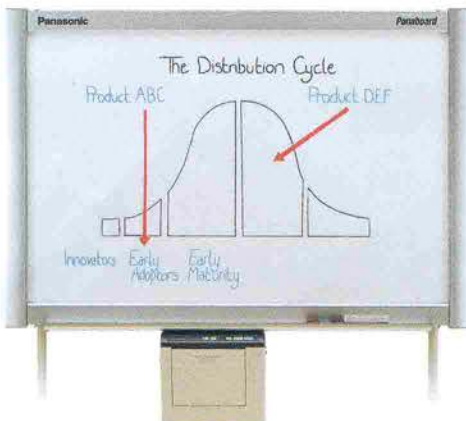


# Panaboard™

## Improves your Presentations and Meetings



### PC Interface



### Panasonic Document Management System

Panaboard UB-5325, UB-5825 and UB-7325 come with utility software that consists of Document Manager and Document Viewer. The meeting contents on the Panaboard screen will become meeting minutes with some annotation by Document Viewer function. The Document Manager makes it easy to file and distribute the meeting minutes quite easily. Supported saving file format is BMP, TIFF, JPG, PNG and PDF.

The scanned image is monochrome.  
The annotation function is used to make the coloured text.

### Printer Driver

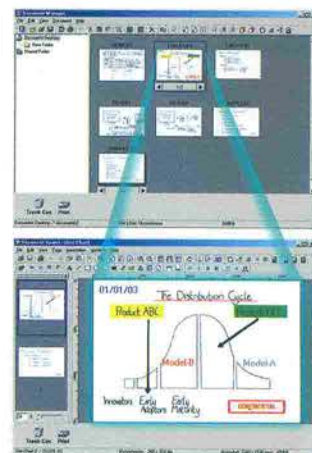
The Panaboard can also work as a PC printer. In a meeting, if you need to print out some documents, the Plug & Play of USB makes it easy to print out documents from the Panaboard.

### TWAIN Driver



By just one click, you can scan the image on the Panaboard screen as image data to your computer and from your computer, you can control the

Panaboard function just like operating the Panaboard control panel.



1 Screen can also be used for the Projector. (UB-7325)

### Specifications

General	Model number	UB-5325	UB-5825	UB-7325
Power Supply		AC 100 - 120 V, 50/60 Hz or AC 220 - 240 V, 50/60 Hz		
Power Consumption (Operational)		1.40 A (AC 100 - 120 V) or 0.75 A (AC 220 - 240 V)		
External Dimensions (Height X Width X Depth, without stand)		1,396 mm X 1,550 mm X 230 mm	1,396 mm X 1,912 mm X 230 mm	1,396 mm x 1,648 mm x 264 mm
Weight (without stand)		36.0 kg	38.5 kg	42.5 kg
Input Block				
Panel Dimensions (Height X Width)		900 mm X 1,400 mm	900 mm X 1,762 mm	900 mm X 1,400 mm
Panel Surface		2 (endless type)		4 (endless type)*
Copying Area (Height X Width)		850 mm X 1,330 mm	850 mm X 1,692 mm	850 mm X 1,330 mm
Scanning System		Image sensors		
Output Block				
Printing System		Fusion thermal transfer type		
Copy Paper		Standard or recycled paper (60-90 g/m <sup>2</sup> )		
Copy Paper size		A4 or Letter		
Copy Density		203 dpi (8 dots/mm)		
Copy Color		Black		
Time Required for Copying		15 sec./sheet		
Continuous Copies		1 to 9		
Contrast Adjustment		Two levels : Normal/Dark		
2-screen Compressed Copying		Yes		No
System Requirements				
Computer		IBM® PC/AT or compatible machine with a CD-ROM drive		
CPU		Pentium® II or higher processor		
Interface		USB 1.1 or USB 2.0 (This electronic board functions with USB 1.1.)		
Operating System		Windows® 98, Windows® Me, Windows® 2000, Windows® XP		
Memory		Windows® 98/Me: 64 MB or more, Windows® 2000: 128 MB or more, Windows® XP: 256 MB or more		
Hard Disk		At least 40 MB free space (except saving space for image file)		
Accessories				
		• Operating instructions, Installation manual • Power Cord • Markers (black, red and blue, one each) • A4 or Letter Size Paper for test (20 sheets) • Thermal Transfer Film (10 m) • Software CD-ROM • Eraser (one pc.)		
Optional Equipment				
Wall-Mounting Kit		KX-B063		
Stand		KX-B061		
Separately Available				
Replacement film		UG-6001 (Set of 2 rolls [50 m] )		
Markers		KX-B031 (set of 10 black markers), KX-B032 (set of 10 red markers), KX-B033 (set of 10 blue markers)		
Erasers		KX-B042 (set of 6 erasers)		
Marker and Eraser Set		KX-B035 (contains 1 black, 1 red and 1 blue markers and 1 eraser)		



UB-5325  
2-Screen Standard size



UB-5825  
2-Screen Wide size



UB-7325  
4-Screen Standard size  
(Stand option)

\*1 Screen can also be used for the Projector.

#### Note:

- Microsoft and Windows are either registered trademarks or trademarks of Microsoft Corporation in the United States and/or other countries.
- Windows is Microsoft® Windows® operating system.
- IBM is a registered trademark of International Business Machines Corporation.
- Pentium is a registered trademark of Intel Corporation in the U.S. and other countries.
- All trademarks referred to in this catalog are property of their respective companies.

<http://panasonic.co.jp/pcc/en/>  
<http://www.panasonic.co.jp/global>

# Panasonic®